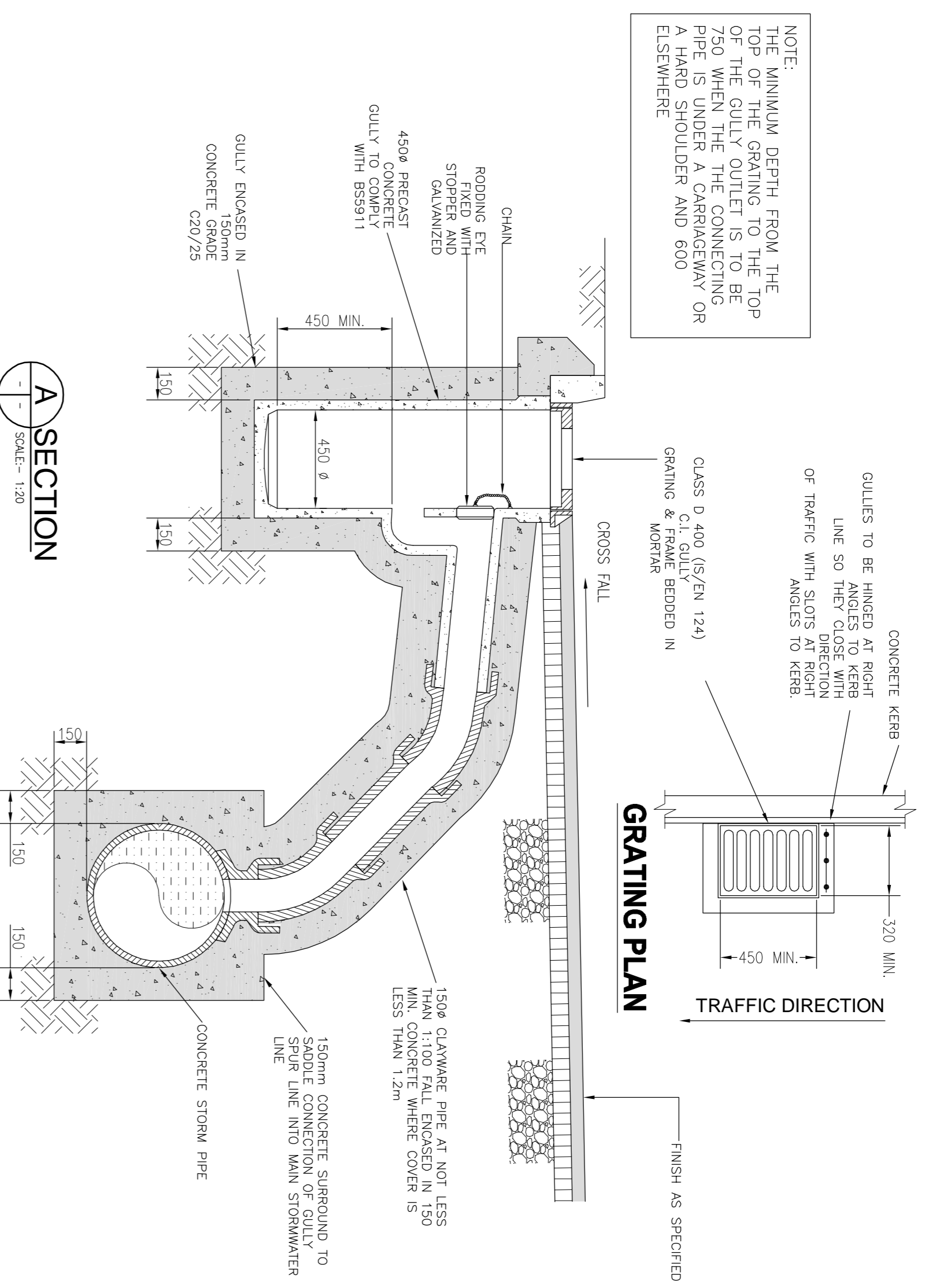
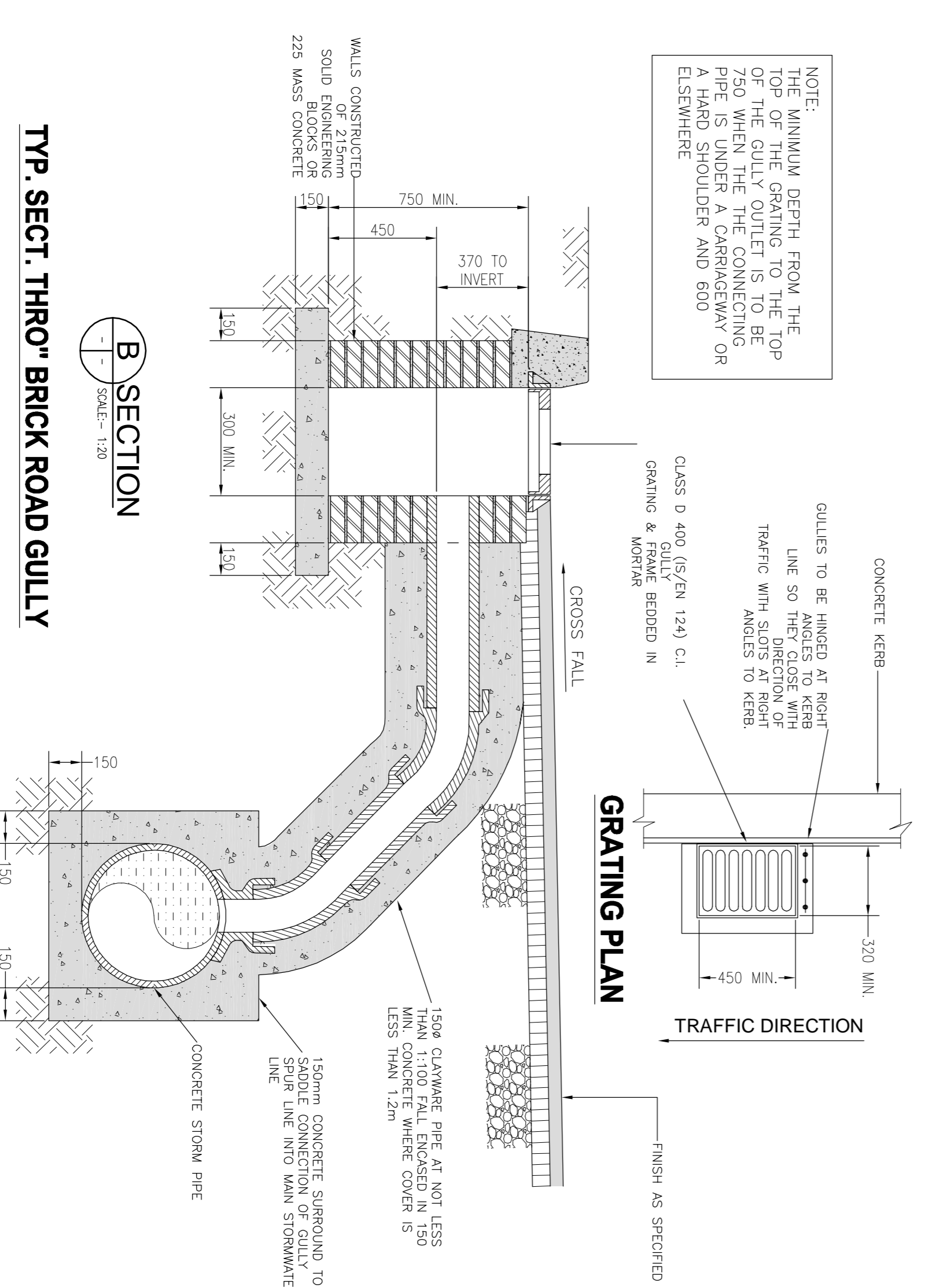


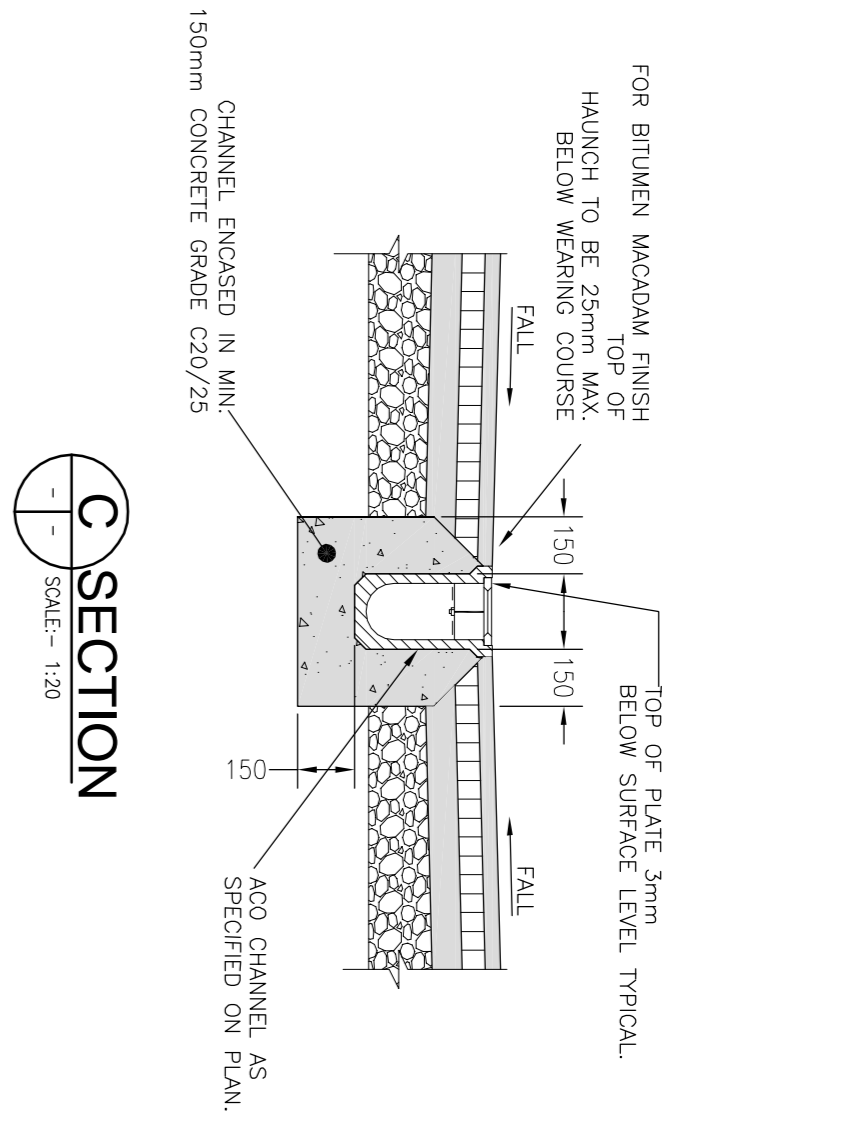
NOTE:
THE MINIMUM DEPTH FROM THE TOP OF THE GRATING TO THE TOP OF THE GULLY OUTLET IS TO BE 750 WHEN UNDER A CARPARKWAY OR A HARD SHOULDER AND 600 ELSEWHERE



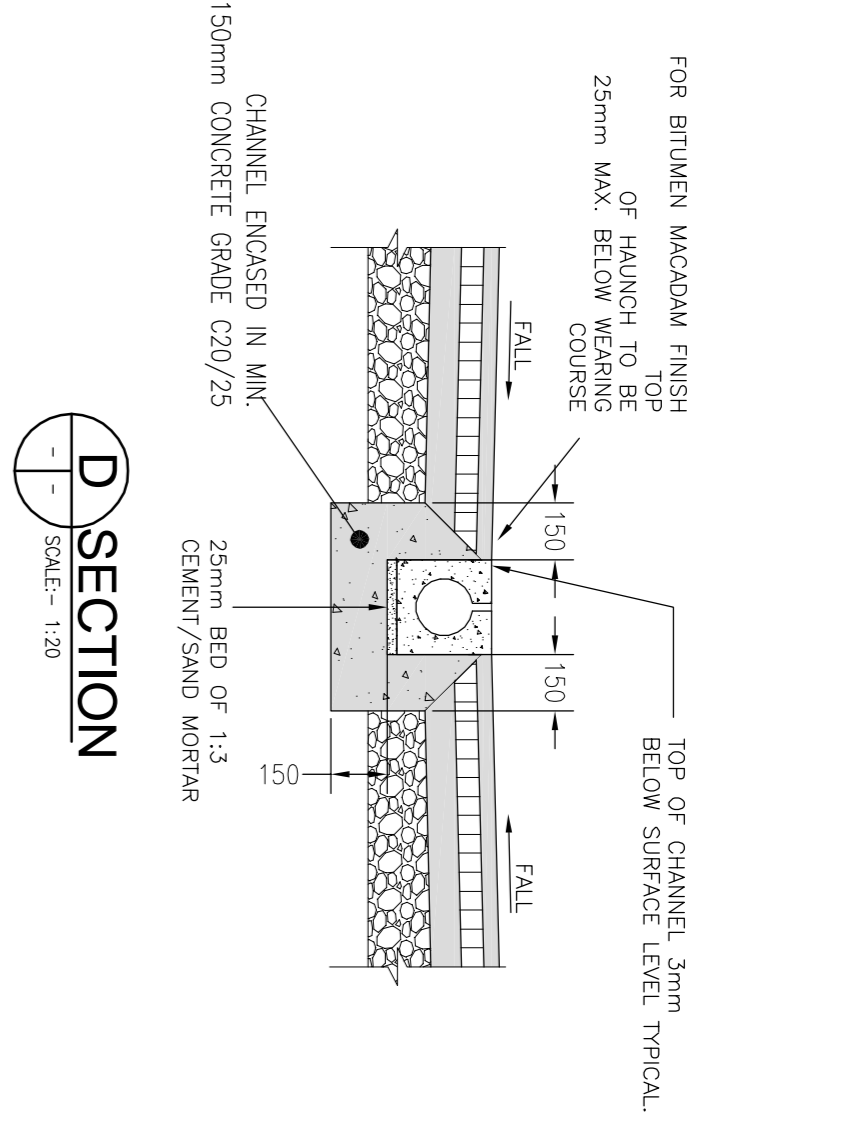
TYP. SECT. THRO" PRECAST ROAD GULLY



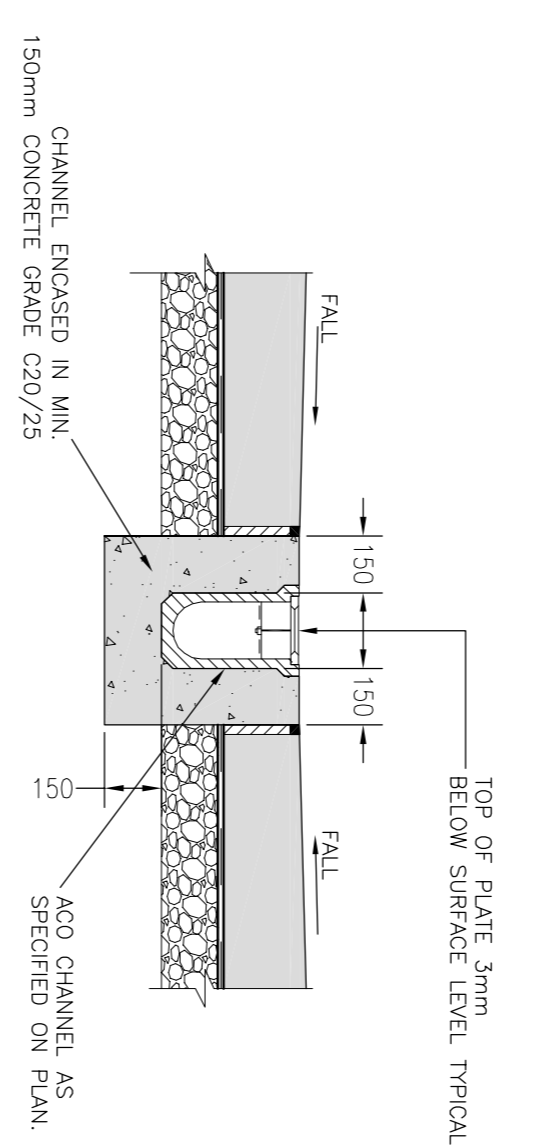
TYP. SECT. THRO" BRICK ROAD GULLY



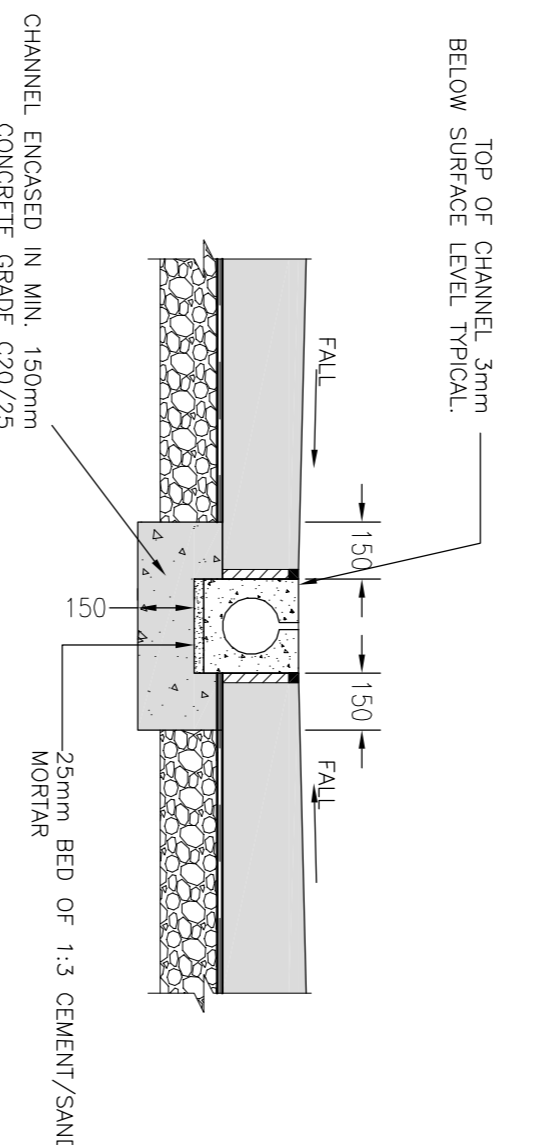
TYPICAL SECTION THRO'UGH ACO CHANNEL IN BITMAC ROADWAY / HARDSTANDING



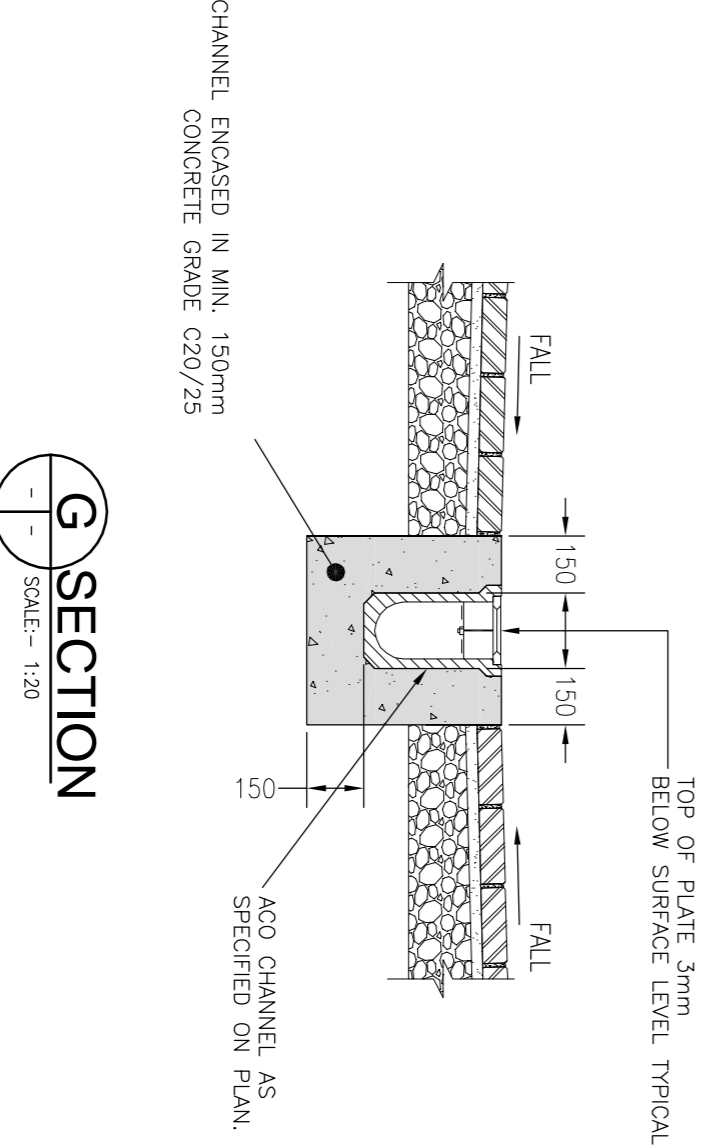
TYPICAL SECTION THRO'UGH PRECAST CHANNEL IN BITMAC ROADWAY / HARDSTANDING



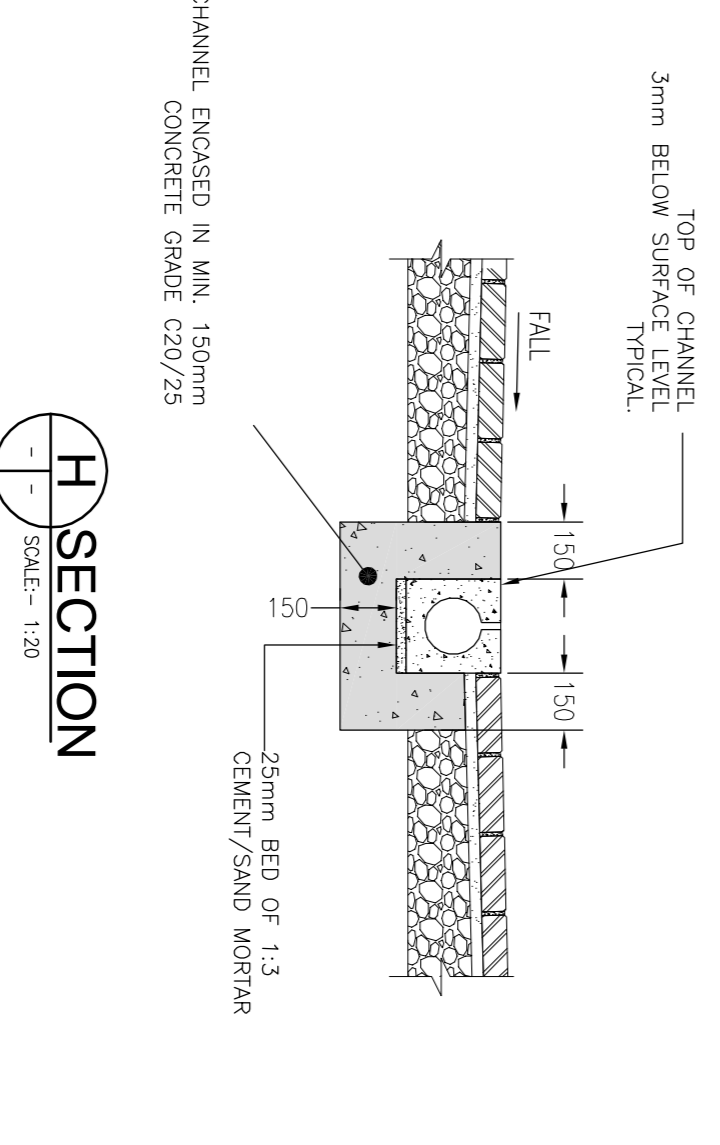
TYPICAL SECTION THRO'UGH ACO CHANNEL IN CONCRETE ROADWAY / HARDSTANDING



TYPICAL SECTION THRO'UGH PRECAST CHANNEL IN CONCRETE ROADWAY / HARDSTANDING

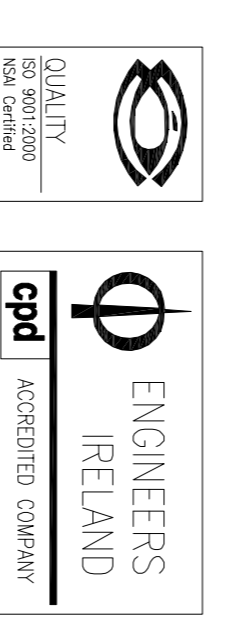


TYPICAL SECTION THRO'UGH ACO CHANNEL IN BLOCK PAVER ROADWAY / HARDSTANDING



TYPICAL SECTION THRO'UGH PRECAST CHANNEL IN BLOCK PAVER ROADWAY / HARDSTANDING

NOTE:
THE MINIMUM DEPTH FROM THE TOP OF THE GRATING TO THE TOP OF THE GULLY OUTLET IS TO BE 750 WHEN THE CONNECTING PIPE IS UNDER A CARPARKWAY OR A HARD SHOULDER AND 600 ELSEWHERE



Rev	Date	Issue register	Drawn	Checked	Approved
1/1	24.11.17	PROGRESS ISSUE	CF	PF	NS
2/1	12.01.18	FRAME B ISSUE	CF	PF	NS

Client: **KILDARE COUNTY COUNCIL**

Job Description: **SOCIAL HOUSING UNITS CASTLEFIN SALLINS, Co. KILDARE**

Scale: **PART 8 ISSUE**

Drawing Title: **GULLIES & ACO CHANNEL DETAILS**

Project No:	16KK042	Revision Ref:	C-052	Rev:	PL1
Date:	10.10.17	Scale:	AS SHOWN		
Drawn By:	C.ZUCCO	Checked By:	P.FLUNCKHEIM	Approved By:	N.PATTERSON

